

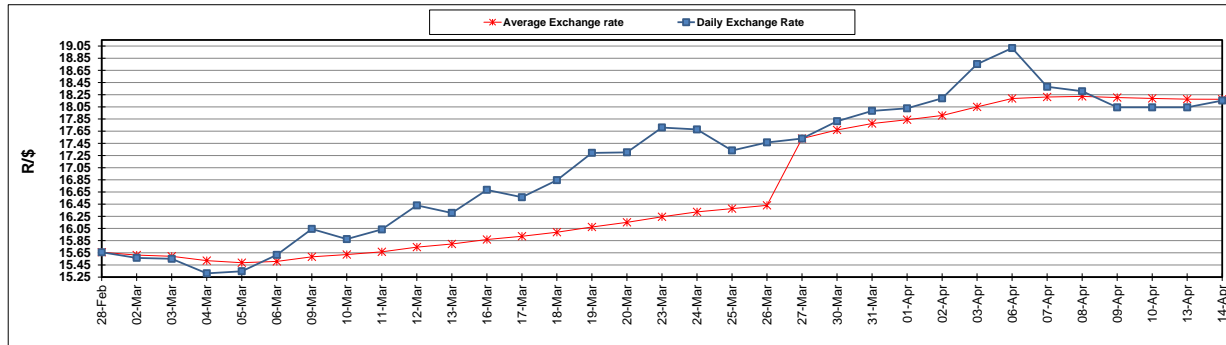
	PETROL 95 ULP	PETROL 93 ULP & LRP	DIESEL 0.05%	DIESEL 0.005%	ILL. PAR.
GAUTENG PUMP PRICE (SA c/l) AS FROM 01/04/2020	1,396.000	1,376.000	-	-	-
WHOLESALE PRICE (SA c/l) AS FROM 01/04/2020	-	-	1,269.560	1,273.960	672.828
SINGLE NATIONAL MAXIMUM RETAIL PRICE	-	-	-	-	840.000
BASIC FUEL PRICE - 14/04/2020 (SA c/l)	300.088	296.351	395.170	407.262	304.060
PRESS RELEASE CONTRIBUTION TO BFP 01/04/2020 - 14/04/2020 (SA c/l)	448.770	438.770	518.630	523.030	468.128
UNIT OVER/(UNDER) RECOVERY - 14/04/2020 (SA c/l)	148.682	142.419	123.460	115.768	164.068
AVERAGE BASIC FUEL PRICE 27/03/2020 - 14/04/2020	310.050	305.422	439.288	447.780	325.105
AVERAGE UNIT OVER/(UNDER) RECOVERY 27/03/2020 - 14/04/2020	189.305	181.164	117.419	113.558	188.715

### ANALYSIS MOVEMENT OF AVERAGE OVER/(UNDER) RECOVERY

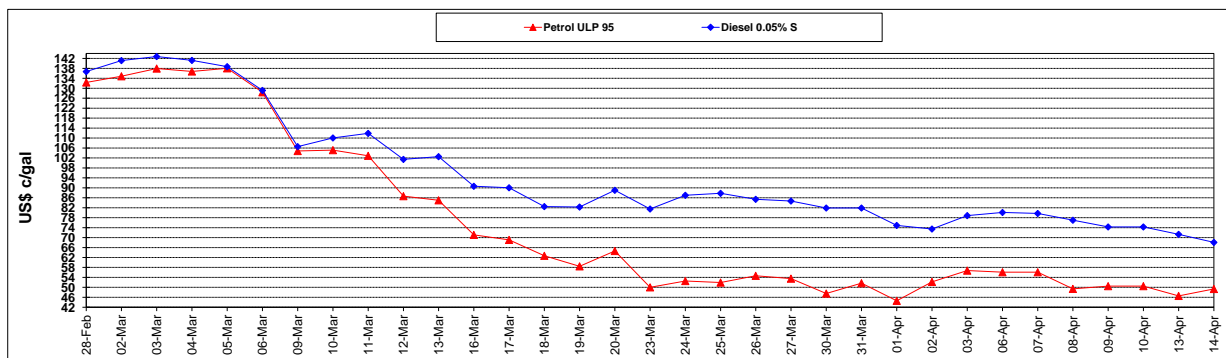
	PETROL 95	PETROL 93	DIESEL 0.05%	DIESEL 0.005%	ILL. PAR.
- MOVEMENT IN INTERNATIONAL PRODUCT PRICES	219.068	210.482	159.588	156.542	219.923
- MOVEMENT IN EXCHANGE RATE	(29.763)	(29.319)	(42.169)	(42.984)	(31.208)
AVERAGE UNIT OVER/(UNDER) RECOVERY 27/03/2020 - 14/04/2020	189.305	181.164	117.419	113.558	188.715

### R/\$ EXCHANGE RATE - (R/\$18.1540 - 14/04/2020)

#### EXCHANGE RATE USED IN BASIC FUEL PRICE



#### INTERNATIONAL PRODUCT PRICES OF BASKET USED IN BASIC FUEL PRICE



#### BASIC FUEL PRICE IN SA CENTS PER LITRE

